



Matthew G. Bevin
Governor

**COMMONWEALTH OF KENTUCKY
TRANSPORTATION CABINET**

Frankfort, Kentucky 40622
www.transportation.ky.gov/

Greg Thomas
Secretary

October 24, 2018

CALL NO. 103
CONTRACT ID NO. 181233
ADDENDUM # 2

Subject: MADISON COUNTY, STP BRO 4212 (053)
Letting October 26, 2018

- (1) Revised - Utility and Rail Certification Note - Pages 23-27 of 107
- (2) Revised - Plan Sheets - R2B and R3

Proposal revisions are available at <http://transportation.ky.gov/Construction-Procurement/>.

If you have any questions, please contact us at 502-564-3500.

Sincerely,

A handwritten signature in black ink that reads "Rachel Mills".

Rachel Mills, P.E.
Director
Division of Construction Procurement

RM:mr
Enclosures



An Equal Opportunity Employer M/F/D

UTILITIES AND RAIL CERTIFICATION NOTE

**Madison County
STP BRO4212052
FD52 076 8930401U
Mile point: 2.443 TO 2.483
REPLACE BRIDGE ON BATTLEFIELD MEMORIAL HWY (US 421) OVER COWBELL CREEK AT JCT WITH
HIGHWAY 21 E (KY 21)(SR 45.5) 076B00021
ITEM NUMBER: 07-1130.00**

PROJECT NOTES ON UTILITIES

Please Note: The information presented in this Utility Note is informational in nature and the information contained herein is not guaranteed.

The contractor will be responsible for contacting all utility facility owners on the subject project to coordinate his activities. The contractor will coordinate his activities to minimize and, where possible, avoid conflicts with utility facilities. Due to the nature of the work proposed, it is unlikely to conflict with the existing utilities beyond minor facility adjustments. Where conflicts with utility facilities are unavoidable, the contractor will coordinate any necessary relocation work with the facility owner and Resident Engineer. The Kentucky Transportation Cabinet maintains the right to remove or alter portions of this contract if a utility conflict occurs. The utility facilities as noted in the previous section(s) have been determined using data garnered by varied means and with varying degrees of accuracy: from the facility owners, a result of S.U.E., field inspections, and/or reviews of record drawings. The facilities defined may not be inclusive of all utilities in the project scope and are not Level A quality, unless specified as such. It is the contractor's responsibility to verify all utilities and their respective locations before excavating.

The contractor shall make every effort to protect underground facilities from damage as prescribed in the Underground Facility Damage Protection Act of 1994, Kentucky Revised Statute KRS 367.4901 to 367.4917. It is the contractor's responsibility to determine and take steps necessary to be in compliance with federal and state damage prevention directives. The contractor is instructed to contact KY 811 for the location of existing underground utilities. Contact shall be made a minimum of two (2) and no more than ten (10) business days prior to excavation. The contractor shall submit Excavation Locate Requests to the Kentucky Contact Center (KY 811) via web ticket entry. The submission of this request does not relieve the contractor from the responsibility of contacting non-member facility owners, whom are to be contacted through their individual Protection Notification Center. It may be necessary for the contractor to contact the County Court Clerk to determine what utility companies have facilities in the area. Non-compliance with these directives can result in the enforcement of penalties.

UTILITIES AND RAIL CERTIFICATION NOTE

Madison County
STP BRO4212052
FD52 076 8930401U
Mile point: 2.443 TO 2.483
REPLACE BRIDGE ON BATTLEFIELD MEMORIAL HWY (US 421) OVER COWBELL CREEK AT JCT WITH
HIGHWAY 21 E (KY 21)(SR 45.5) 076B00021
ITEM NUMBER: 07-1130.00

NOTE: DO NOT DISTURB THE FOLLOWING FACILITIES LOCATED WITHIN THE PROJECT DISTURB LIMITS

The Contractor is fully responsible for protection of all utilities listed below

Bluegrass Energy – Electric

The company has overhead utilities along the West side of US 421. Additionally, these utilities cross US 421 in two locations. One overhead crossing is diagonal from approximate Stations 14+00 to 17+00. This overhead crossing passes over the West abutments of the proposed US 421 bridge. The second overhead crossing is near Station 19+50.

Windstream Communications – Telephone

The company has overhead utilities along the West side of US 421. Additionally, these utilities cross diagonally over US 421 near Station 18+50 and are located on the East side of US 421 from approximate Stations 19+00 to 21+00.

Spectrum – CATV

The company has yet to provide a proposed relocation plan for their facilities; consequently, we are unable to identify the current, or proposed, location of the company's facilities. It is anticipated that the company may have facilities located along the West side of US 421. These are likely overhead utilities attached to Bluegrass Energy or Windstream.

Southern Madison Water District – Water

The water district has a 4-inch asbestos cement waterline along the East side of US 421 which crosses under Dillon Court. Additionally, service lines cross under US 421 at approximate Stations 18+25, 18+50, and 20+25. The service lines are connected to water meters located on the West side of US 421.

Please be advised that the 4-inch asbestos cement waterline along the East side of US 421 shall not be disturbed. Use extra caution while working near the East bridge abutments. If the bridge cannot be designed in a manner to avoid conflict with the waterline, please contact Nick Lester or Ken Day at 859-246-2355.

Berea Utilities – Water

The city has a waterline along the South side of KY 21 which crosses under US 421 near Station 14+75.

UTILITIES AND RAIL CERTIFICATION NOTE

Madison County
STP BRO4212052
FD52 076 8930401U
Mile point: 2.443 TO 2.483
**REPLACE BRIDGE ON BATTLEFIELD MEMORIAL HWY (US 421) OVER COWBELL CREEK AT JCT WITH
HIGHWAY 21 E (KY 21)(SR 45.5) 076B00021
ITEM NUMBER: 07-1130.00**

**THE FOLLOWING FACILITY OWNERS ARE RELOCATING/ADJUSTING THEIR FACILITIES WITHIN THE
PROJECT LIMITS AND WILL BE COMPLETE PRIOR TO CONSTRUCTION**

Bluegrass Energy – Electric

The company will attach to Windstream poles near Stations 15+50 and 17+00. These adjustments should relocate the overhead utilities West of the proposed US 421 bridge.

Windstream Communications – Telephone

The company relocated one pole with overhead utilities attached near Station 17+00. The pole was placed further West of US 421 and outside of the disturbance limits. The pole will likely be utilized by Windstream, Bluegrass Energy, and Spectrum.

Spectrum – CATV

The company has yet to provide a proposed relocation plan for their facilities; consequently, we are unable to identify the current, or proposed, location of the company's facilities. It is anticipated that the company may have facilities located along the West side of US 421. These are likely overhead utilities attached to Bluegrass Energy or Windstream.

**THE FOLLOWING FACILITY OWNERS HAVE FACILITIES TO BE RELOCATED/ADJUSTED BY THE OWNER OR
THEIR SUBCONTRACTOR AND IS TO BE COORDINATED WITH THE ROAD CONTRACT**

Southern Madison Water District – Water

The water district will relocate three service lines crossing under US 421, to avoid conflict with the ditch line on the West side of US 421. An agreement has not been executed, but it is estimated that the relocation work will be complete by 12-31-2018.

UTILITIES AND RAIL CERTIFICATION NOTE

Madison County
STP BRO4212052
FD52 076 8930401U
Mile point: 2.443 TO 2.483
REPLACE BRIDGE ON BATTLEFIELD MEMORIAL HWY (US 421) OVER COWBELL CREEK AT JCT WITH
HIGHWAY 21 E (KY 21)(SR 45.5) 076B00021
ITEM NUMBER: 07-1130.00

THE FOLLOWING FACILITY OWNERS HAVE FACILITIES TO BE RELOCATED/ADJUSTED BY THE ROAD
CONTRACTOR AS INCLUDED IN THIS CONTRACT

Not Applicable

RAIL COMPANIES HAVE FACILITIES IN CONJUNCTION WITH THIS PROJECT AS NOTED

No Rail Involvement Rail Involved Rail Adjacent

UTILITIES AND RAIL CERTIFICATION NOTE

Madison County
STP BRO4212052
FD52 076 8930401U
Mile point: 2.443 TO 2.483
REPLACE BRIDGE ON BATTLEFIELD MEMORIAL HWY (US 421) OVER COWBELL CREEK AT JCT WITH
HIGHWAY 21 E (KY 21)(SR 45.5) 076B00021
ITEM NUMBER: 07-1130.00

AREA FACILITY OWNER CONTACT LIST

| Facility Owner | Address | Contact Name | Phone | Email |
|---------------------------------|---|---------------|----------------|------------------------------|
| Bluegrass Energy | 1201 Lexington Road, P.O. Box 990 Nicholasville, KY 40340 | Tony Smith | (859) 885-2134 | tonys@bgenergy.com |
| Southern Madison Water District | P.O. Box 220 Berea, KY 40403 | Tommy Bussell | (859) 986-9031 | smwdctb@windstream.net |
| Spectrum | 1615 Foxhaven Drive Richmond, KY 40475 | Mike Todd | (859) 302-5969 | Mike.Todd@charter.com |
| Windstream Communications | 325 W. Main Street Lexington, KY 40507 | Steve Johnson | (859) 357-6209 | Steve.Johnson@windstream.com |
| Berea Utilities | P.O. Box 926 Berea, KY 40403 | Ed Fortner | (859) 986-4391 | efortner@berekky.gov |

GENERAL NOTES

| | | |
|-----------|-----------|-----------|
| COUNTY OF | ITEM NO. | SHEET NO. |
| MADISON | 7-1130.00 | R2B |

N.G.S. (U.S.G.S.) BENCH MARKS

DO NOT DISTURB N.G.S. (U.S.G.S.) BENCH MARKS IN ANY MANNER UNLESS DIRECTED BY THE ENGINEER.

BEFORE YOU DIG

THE CONTRACTOR IS INSTRUCTED TO CALL 1-800-752-6007 TO REACH KY 811, THE ONE-CALL SYSTEM FOR INFORMATION ON THE LOCATION OF EXISTING UNDERGROUND UTILITIES. THE CALL IS TO BE PLACED A MINIMUM OF TWO (2) AND NO MORE THAN TEN (10) BUSINESS DAYS PRIOR TO EXCAVATION. THE CONTRACTOR SHOULD BE AWARE THAT OWNERS OF UNDERGROUND FACILITIES ARE NOT REQUIRED TO BE MEMBERS OF THE KY 811 ONE-CALL BEFORE-U-DIG (BUD) SERVICE. THE CONTRACTOR MUST COORDINATE EXCAVATION WITH THE UTILITY OWNERS, INCLUDING THOSE WHOM DO NOT SUBSCRIBE TO KY 811. IT MAY BE NECESSARY FOR THE CONTRACTOR TO CONTACT THE COUNTY COURT CLERK TO DETERMINE WHAT UTILITY COMPANIES HAVE FACILITIES IN THE AREA.

UTILITY OWNER CONTACTS

AT&T - KY
894 EAST MAIN ST EXT
GEORGETOWN, KY 40324
502-867-8240
FRANK AMBROSE

BLUEGRASS ENERGY
1201 LEXINGTON RD
NICHOLASVILLE, KY 40356
859-621-3020
TONY SMITH

SOUTHERN MADISON WATER DISTRICT
P O BOX 220
207 NORTH DOGWOOD DRIVE
BEREA, KY 40403
859-986-9031
TOMMY BUSSELL

CITY OF BEREA
P.O. BOX 926
200 HARRISON RD
BEREA, KY 40403
859-986-4391
ED FORTNER

SPECTRUM
1617 FOXHAVEN DR
RICHMOND, KY 40475
859-624-6974
ELBERT LAMB

KU/ LG&E
P.O. BOX 32020
820 WEST BROADWAY
LOUISVILLE, KY 40202
502-627-3708
GREG GEISER

WINDSTREAM COMMUNICATIONS
130 WEST NEW CIRCLE RD
SUTIE 170
LEXINGTON, KY 40505
859-357-6209
STEVE JOHNSON

EXISTING UTILITIES

AN ASBESTOS COATED WATER MAIN HAS BEEN LOCATED ON THE EAST SIDE OF US 421. THE CONTRACTOR IS ADVISED THAT THERE IS NO INTENTION TO RELOCATE THIS MAIN. THE CONTRACTOR SHALL EXERCISE CAUTION TO NOT DISTURB THE WATER MAIN DURING CONSTRUCTION. THE CONTRACTOR SHALL BE RESPONSIBLE FOR ANY DAMAGE TO UNDERGROUND UTILITIES AND NO DIRECT PAYMENT WILL BE MADE FOR REPAIR OR REPLACEMENT THEREOF. IF A UTILITY IS IN CONFLICT AND AN AVOIDANCE CANNOT BE DESIGNED, THE UTILITY OWNER AND KYTC DIVISION OF UTILITIES SHALL BE CONTACTED IMMEDIATELY.

UTILITY RELOCATIONS

THE CONTRACTOR SHALL COORDINATE CONSTRUCTION ACTIVITIES WITH LOCAL UTILITY COMPANIES THAT REQUIRE RELOCATIONS OF THEIR RESPECTIVE UTILITIES WITHIN THE LIMITS OF CONSTRUCTION.

REMOVAL OF GUARDRAIL

THE DEPARTMENT WILL RETAIN OWNERSHIP OF THE EXISTING GUARDRAIL, GUARDRAIL POSTS, AND HARDWARE. DELIVER EXISTING GUARDRAIL AND COMPONENTS TO THE BAILEY BRIDGE LOT LOCATED AT 1224 WILKINSON BLVD IN FRANKFORT, KENTUCKY. CONTACT THE LOT SUPERVISOR AT 502-564-8187 TO SCHEDULE DELIVERY OF MATERIAL A MINIMUM OF 10 WORKING DAYS IN ADVANCE OF DELIVERY. DISPOSE OF ALL REMOVED CONCRETE OFF THE RIGHT-OF-WAY.

COMPACTION OF ASPHALT MIXTURES

WILL ACCEPT THE COMPACTION OF ASPHALT MIXTURES FURNISHED ON THIS PROJECT BY OPTION B ACCORDING TO SUBSECTIONS 402.03.02 AND 403.03.10 OF THE STANDARD SPECIFICATIONS.

DEPARTMENT OF THE ARMY PERMIT AND WATER QUALITY CERTIFICATION APPROVALS

A DEPARTMENT OF THE ARMY (DA) PERMIT, WHICH MAY REQUIRE APPROVAL OF A STATE WATER QUALITY CERTIFICATION FROM THE KENTUCKY DIVISION OF WATER, REGULATES THIS PROJECT AT ONE OR MORE LOCATIONS. PERFORM ALL APPLICABLE WORK IN COMPLIANCE WITH THE CONDITIONS STATED IN THE DA PERMIT AND THE APPROVED WATER QUALITY CERTIFICATION. POST A COPY OF THE DA PERMIT AND THE WATER QUALITY CERTIFICATION IN A CONSPICUOUS PLACE AT THE PROJECT SITE. IF A DA PERMIT OR WATER QUALITY CERTIFICATION APPROVAL IS PENDING, DO NOT WORK IN OR DISTURB THE DESIGNATED AREA(S) UNTIL OBTAINING THE APPROPRIATE APPROVAL(S). REFER TO NOTICE(S) CONTAINED IN THE CONTRACT BID PROPOSAL FOR DESIGNATED AREA(S) WHERE WORK IS PROHIBITED BY THE ABSENCE OF APPROVAL.

PROPERTY DAMAGE

THE CONTRACTOR SHALL BE RESPONSIBLE FOR ALL DAMAGE TO PUBLIC AND/OR PRIVATE PROPERTY RESULTING FROM THIS WORK. RESTORE ALL DISTURBED FEATURES IN LIKE KIND MATERIALS AND DESIGN TO THE EXISTING OR PROPOSED GRADES, AS APPLICABLE, AT NO ADDITIONAL COST TO THE OWNER.

TEMPORARY EASEMENT DISTURBANCE

ANY DISTURBED AREA WITHIN THE EASEMENT LIMITS, OR AREA DESIGNATED BY THE ENGINEER, SHALL BE FINISH GRADED AND SEEDED OR SODDED TO THE SATISFACTION OF THE ENGINEER. THE CONTRACTOR SHALL MAKE EVERY EFFORT TO AVOID DISTURBANCE TO EXISTING TREES, SHRUBS, FLOWERS OR ANY OTHER APPURTANCES WITHIN THE EASEMENT LIMITS DURING CONSTRUCTION.

TYPICAL SECTIONS

DIMENSIONS SHOWN ON THE TYPICAL SECTIONS FOR PAVEMENT WIDTH AND THICKNESS ARE NOMINAL OR TYPICAL DIMENSIONS. THE ACTUAL DIMENSIONS TO BE CONSTRUCTED MAY BE VARIED TO FIT EXISTING CONDITIONS AS DIRECTED OR APPROVED BY THE ENGINEER.

ROADBED NOTE, EMBANKMENT-IN-PLACE

USE EMBANKMENT-IN-PLACE WITH A MINIMUM C.B.R. VALUE OF 3.0 OR GREATER IN THE TOP 12 INCHES OF ROADBED IN CUT AND FILL SECTIONS.

STANDARD DRAWINGS

STANDARD DRAWINGS ARE NOT ATTACHED TO THESE PLANS. A STANDARD DRAWING BOOK AND THE HEADWALL SUPPLEMENTAL BOOK MAY BE OBTAINED FROM THE POLICY SUPPORT BRANCH OF THE DEPARTMENT OF ADMINISTRATIVE SERVICES IN FRANKFORT, KY. AT (502) 564-3670.

SPECIAL NOTES

SPECIAL NOTE FOR THE PROTECTION OF GRAY BATS
SPECIAL NOTE 11F: TURF REINFORCEMENT MAT
SPECIAL NOTE 11M: BARCODE LABEL ON PERMANENT SIGNS
SPECIAL NOTE 1I: PORTABLE CHANGEABLE MESSAGE SIGNS

GENERAL NOTES

| | | |
|-----------|-----------|-----------|
| COUNTY OF | ITEM NO. | SHEET NO. |
| MADISON | 7-1130.00 | R2B |

N.G.S. (U.S.G.S.) BENCH MARKS

DO NOT DISTURB N.G.S. (U.S.G.S.) BENCH MARKS IN ANY MANNER UNLESS DIRECTED BY THE ENGINEER.

BEFORE YOU DIG

THE CONTRACTOR IS INSTRUCTED TO CALL 1-800-752-6007 TO REACH KY 811, THE ONE-CALL SYSTEM FOR INFORMATION ON THE LOCATION OF EXISTING UNDERGROUND UTILITIES. THE CALL IS TO BE PLACED A MINIMUM OF TWO (2) AND NO MORE THAN TEN (10) BUSINESS DAYS PRIOR TO EXCAVATION. THE CONTRACTOR SHOULD BE AWARE THAT OWNERS OF UNDERGROUND FACILITIES ARE NOT REQUIRED TO BE MEMBERS OF THE KY 811 ONE-CALL BEFORE-U-DIG (BUD) SERVICE. THE CONTRACTOR MUST COORDINATE EXCAVATION WITH THE UTILITY OWNERS, INCLUDING THOSE WHOM DO NOT SUBSCRIBE TO KY 811. IT MAY BE NECESSARY FOR THE CONTRACTOR TO CONTACT THE COUNTY COURT CLERK TO DETERMINE WHAT UTILITY COMPANIES HAVE FACILITIES IN THE AREA.

UTILITY OWNER CONTACTS

AT&T - KY
894 EAST MAIN ST EXT
GEORGETOWN, KY 40324
502-867-8240
FRANK AMBROSE

BLUEGRASS ENERGY
1201 LEXINGTON RD
NICHOLASVILLE, KY 40356
859-621-3020
TONY SMITH

SOUTHERN MADISON WATER DISTRICT
P.O. BOX 220
207 NORTH DOGWOOD DRIVE
BEREA, KY 40403
859-986-9031
TOMMY BUSSELL

CITY OF BERE
P.O. BOX 926
200 HARRISON RD
BEREA, KY 40403
859-986-4391
ED FORTNER

SPECTRUM
1617 FOXHAVEN DR
RICHMOND, KY 40475
859-624-6974
ELBERT LAMB

KU/ LG&E
P.O. BOX 32020
820 WEST BROADWAY
LOUISVILLE, KY 40202
502-627-3708
GREG GEISER

WINDSTREAM COMMUNICATIONS
130 WEST NEW CIRCLE RD
SUTIE 170
LEXINGTON, KY 40505
859-357-6209
STEVE JOHNSON

EXISTING UTILITIES

AN ASBESTOS COATED WATER MAIN HAS BEEN LOCATED ON THE EAST SIDE OF US 421. THE CONTRACTOR IS ADVISED THAT THERE IS NO INTENTION TO RELOCATE THIS MAIN. THE CONTRACTOR SHALL EXERCISE CAUTION TO NOT DISTURB THE WATER MAIN DURING CONSTRUCTION. THE CONTRACTOR SHALL BE RESPONSIBLE FOR ANY DAMAGE TO UNDERGROUND UTILITIES AND NO DIRECT PAYMENT WILL BE MADE FOR REPAIR OR REPLACEMENT THEREOF. IF A UTILITY IS IN CONFLICT AND AN AVOIDANCE CANNOT BE DESIGNED, THE UTILITY OWNER AND KYTC DIVISION OF UTILITIES SHALL BE CONTACTED IMMEDIATELY.

UTILITY RELOCATIONS

THE CONTRACTOR SHALL COORDINATE CONSTRUCTION ACTIVITIES WITH LOCAL UTILITY COMPANIES THAT REQUIRE RELOCATIONS OF THEIR RESPECTIVE UTILITIES WITHIN THE LIMITS OF CONSTRUCTION.

REMOVAL OF GUARDRAIL

THE DEPARTMENT WILL RETAIN OWNERSHIP OF THE EXISTING GUARDRAIL, GUARDRAIL POSTS, AND HARDWARE. DELIVER EXISTING GUARDRAIL AND COMPONENTS TO THE BAILEY BRIDGE LOT LOCATED AT 1224 WILKINSON BLVD IN FRANKFORT, KENTUCKY. CONTACT THE LOT SUPERVISOR AT 502-564-8187 TO SCHEDULE DELIVERY OF MATERIAL A MINIMUM OF 10 WORKING DAYS IN ADVANCE OF DELIVERY. DISPOSE OF ALL REMOVED CONCRETE OFF THE RIGHT-OF-WAY.

COMPACTION OF ASPHALT MIXTURES

WILL ACCEPT THE COMPACTION OF ASPHALT MIXTURES FURNISHED ON THIS PROJECT BY OPTION B ACCORDING TO SUBSECTIONS 402.03.02 AND 403.03.10 OF THE STANDARD SPECIFICATIONS.

DEPARTMENT OF THE ARMY PERMIT AND WATER QUALITY CERTIFICATION APPROVALS

A DEPARTMENT OF THE ARMY (DA) PERMIT, WHICH MAY REQUIRE APPROVAL OF A STATE WATER QUALITY CERTIFICATION FROM THE KENTUCKY DIVISION OF WATER, REGULATES THIS PROJECT AT ONE OR MORE LOCATIONS. PERFORM ALL APPLICABLE WORK IN COMPLIANCE WITH THE CONDITIONS STATED IN THE DA PERMIT AND THE APPROVED WATER QUALITY CERTIFICATION. POST A COPY OF THE DA PERMIT AND THE WATER QUALITY CERTIFICATION IN A CONSPICUOUS PLACE AT THE PROJECT SITE. IF A DA PERMIT OR WATER QUALITY CERTIFICATION APPROVAL IS PENDING, DO NOT WORK IN OR DISTURB THE DESIGNATED AREA(S) UNTIL OBTAINING THE APPROPRIATE APPROVAL(S). REFER TO NOTICE(S) CONTAINED IN THE CONTRACT BID PROPOSAL FOR DESIGNATED AREA(S) WHERE WORK IS PROHIBITED BY THE ABSENCE OF APPROVAL.

PROPERTY DAMAGE

THE CONTRACTOR SHALL BE RESPONSIBLE FOR ALL DAMAGE TO PUBLIC AND/OR PRIVATE PROPERTY RESULTING FROM THIS WORK. RESTORE ALL DISTURBED FEATURES IN LIKE KIND MATERIALS AND DESIGN TO THE EXISTING OR PROPOSED GRADES, AS APPLICABLE, AT NO ADDITIONAL COST TO THE OWNER.

TEMPORARY EASEMENT DISTURBANCE

ANY DISTURBED AREA WITHIN THE EASEMENT LIMITS, OR AREA DESIGNATED BY THE ENGINEER, SHALL BE FINISH GRADED AND SEEDED OR SODDED TO THE SATISFACTION OF THE ENGINEER. THE CONTRACTOR SHALL MAKE EVERY EFFORT TO AVOID DISTURBANCE TO EXISTING TREES, SHRUBS, FLOWERS OR ANY OTHER APPURTANCES WITHIN THE EASEMENT LIMITS DURING CONSTRUCTION.

TYPICAL SECTIONS

DIMENSIONS SHOWN ON THE TYPICAL SECTIONS FOR PAVEMENT WIDTH AND THICKNESS ARE NOMINAL OR TYPICAL DIMENSIONS. THE ACTUAL DIMENSIONS TO BE CONSTRUCTED MAY BE VARIED TO FIT EXISTING CONDITIONS AS DIRECTED OR APPROVED BY THE ENGINEER.

ROADBED NOTE, EMBANKMENT-IN-PLACE

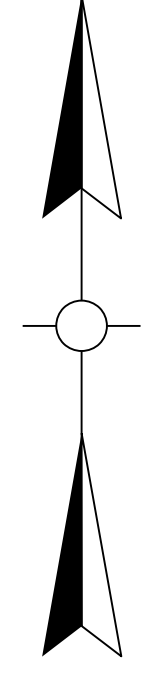
USE EMBANKMENT-IN-PLACE WITH A MINIMUM C.B.R. VALUE OF 3.0 OR GREATER IN THE TOP 12 INCHES OF ROADBED IN CUT AND FILL SECTIONS.

STANDARD DRAWINGS

STANDARD DRAWINGS ARE NOT ATTACHED TO THESE PLANS. A STANDARD DRAWING BOOK AND THE HEADWALL SUPPLEMENTAL BOOK MAY BE OBTAINED FROM THE POLICY SUPPORT BRANCH OF THE DEPARTMENT OF ADMINISTRATIVE SERVICES IN FRANKFORT, KY. AT (502) 564-3670.

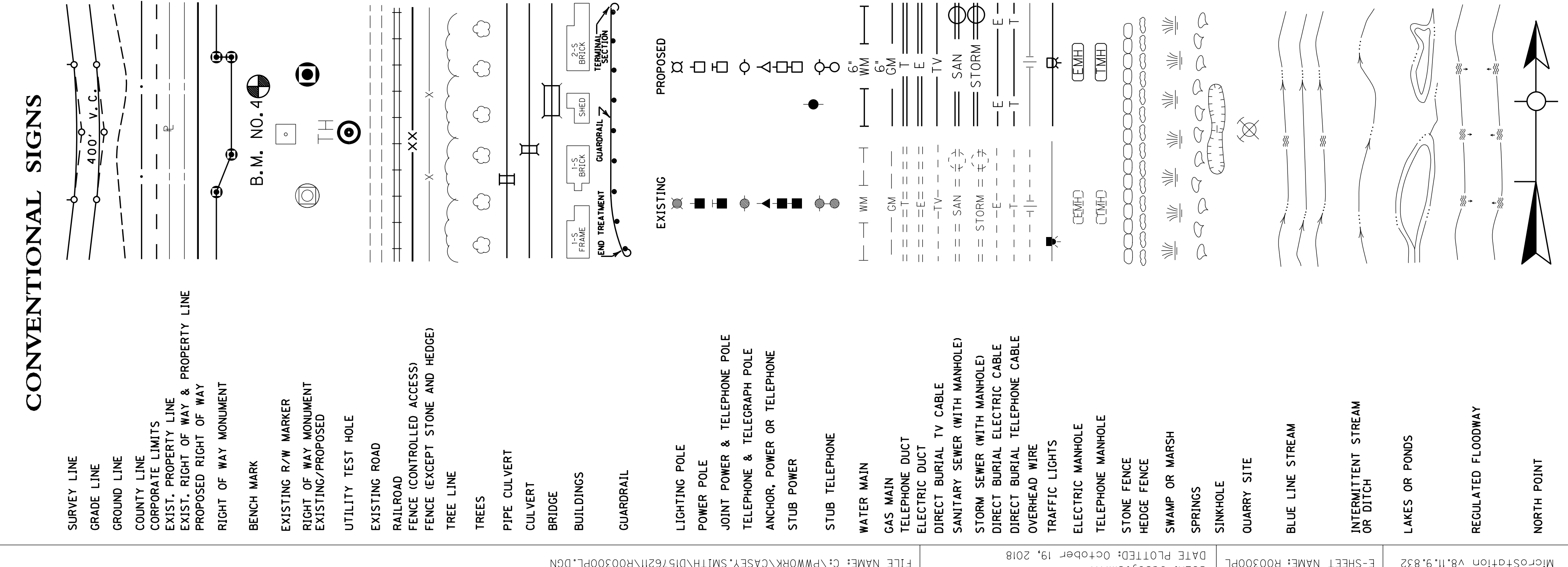
SPECIAL NOTES

SPECIAL NOTE FOR THE PROTECTION OF GRAY BATS
SPECIAL NOTE 11F: TURF REINFORCEMENT MAT
SPECIAL NOTE 11M: BARCODE LABEL ON PERMANENT SIGNS
SPECIAL NOTE 1I: PORTABLE CHANGEABLE MESSAGE SIGNS



- (A) $N70^{\circ}32'19''W \ 13.02'$
- (B) $S3^{\circ}56'57''E \ 76.03'$
- (C) $N83^{\circ}21'36''W \ 11.37'$
- (D) $S87^{\circ}44'20''E \ 20.00'$
- (E) $ARC = 106.81' LT$
 $R = 985.37'$
 $CHORD = 50^{\circ}50'38''E \sim 106.75'$
- (F) $S3^{\circ}56'57''E \ 117.93'$

STA 14+00 CONST 27 LF EDGE KEY
 STA 14+00 TO 15+50 550 SOYD MILLING
 LT STA 14+50 TO LT STA 15+50 TRANSITION PAVEMENT FROM EXISTING (9.82') TO PROPOSED (12.00') WIDTH
 LT STA 14+90 TO LT STA 15+03.03 TRANSITION PAVED SHOULDER OVERLAY FROM EXISTING (4.70' US 421) TO EXISTING (2.00' KY 21) WIDTH
 LT STA 15+00 CONST 35 LF EDGE KEY
 LT STA 15+05 OVERLAY KY 21 TO THE BACK OF RADIUS AS FLAGGED
 LT STA 15+31 TO LT STA 15+50 PAVE SHOULDER ON KY 21 TO FACE OF GUARDRAIL TO BACK OF RADIUS AS FLAGGED
 LT STA 15+37.33 TO LT STA 15+97 CONSTRUCT 50 LF W BEAM GUARDRAIL 25 LF W BEAM GUARDRAIL SINGLE FACE-A 1'- TERMINAL SECTION TYPE 1
 LT STA 15+92 TO LT STA 17+00 REMOVE 126 LF EX GUARDRAIL
 STA 16+11 REMOVE EXISTING 24' SINGLE SPAN BRIDGE. ALL MATERIALS OF THE EXISTING BRIDGE SHALL BECOME THE PROPERTY OF THE CONTRACTOR AND SHALL BE DISPOSED OF IN ACCORDANCE WITH THE CURRENT SPECIFICATIONS.
 STA 16+11 CONSTRUCT 40' PRECAST 3-SIDED CULVERT CONST. 56 LF GUARDRAIL "W" BEAM - S FACE BR
 LT STA 16+25 TO LT STA 17+00 CONST. 75 LF OF W BEAM GUARDRAIL 25 LF W BEAM GUARDRAIL SINGLE FACE-A 1'- TERMINAL SECTION TYPE 1
 LT STA 16+44 TO LT STA 16+92.42 CONST. SPCL 2' FB DITCH -23 SOYD TRM 1
 LT STA 17+50.77 TO LT STA 19+75 CONST. SPCL "V" DITCH
 C.P. 105
 LT STA 17+10 CONST. 12' ENTRANCE
 - 70 SOYD SURFACE
 - 71 SOYD BASE
 - 73 SOYD CSB
 - 60 LF OF 18" ENTRANCE PIPE
 (DO NOT DISTURB EXISTING BRICK POSTS)
 LT STA 19+35 END PAVED SHOULDER
 STA 19+94.4 BEGIN LANE TAPER (55:1)
 TO EX. WIDTH (10.58' LT) (10.08' RT)
 STA 19+61.49 ML =
 STA 50+00.00 DILLON CT.
 END CONST
 STA 21+00.00
 LT STA 20+25 CONST ENTRANCE APPROX
 264 SOYD 1.25' SURF
 264 SOYD 3' BASE
 264 SOYD 8' CSB
 (USE DILLON COURT PAVEMENT DESIGN)



FILE NAME: C:\PWORK\KAS\SMITH\DI51621\R0300PL.DGN
 DATE PLOTTED: October 19, 2018
 E-SHEET NAME: R0300PL
 PROJECT STP BRO 4212 045
 NUMBERS: FD52 076 0421 002-003
 US 421 OVER COWBELL CREEK
 PLAN SHEET

DESIGNED BY:
 DATE SUBMITTED:
 SCALE: 1"=50'

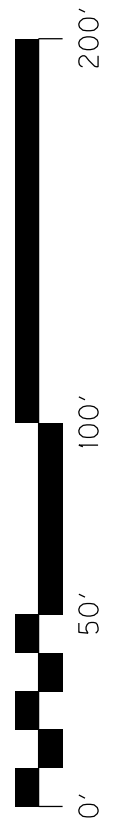
Commonwealth of Kentucky
DEPARTMENT OF HIGHWAYS
 COUNTY OF
MADISON

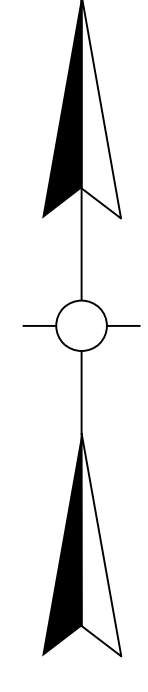
PROJECT STP BRO 4212 045
 NUMBERS: FD52 076 0421 002-003

US 421 OVER COWBELL CREEK
 PLAN SHEET

BEFORE YOU DIG

The contractor is instructed to call 1-800-752-6007 to reach KY 811, the one-call system for information on the location of existing underground utilities. The call is to be placed a minimum of two (2) and no more than ten (10) business days prior to excavation to the members of the KY 811 one-call Before-Dig (BD) service. The contractor must coordinate excavation with the utility owners, including those whom do not subscribe to KY 811. It may be necessary for the contractor to contact the County Court Clerk to determine what utility companies have facilities in the area.





- (A) $N70^{\circ}32'19''W \ 13.02'$
- (B) $S3^{\circ}56'57''E \ 76.03'$
- (C) $N83^{\circ}21'36''W \ 11.37'$
- (D) $S87^{\circ}44'20''E \ 20.00'$
- (E) $Arc = 106.81' LT$
 $R = 985.37'$
 $Chord = 50^{\circ}50'38''E \sim 106.75'$
- (F) $S3^{\circ}56'57''E \ 117.93'$

STA 14+00 CONST 27 LF EDGE KEY
 STA 14+00 TO 15+50 550 SOYD MILLING
 LT STA 14+50 TO LT STA 15+50 TRANSITION PAVEMENT FROM EXISTING (9.82') TO PROPOSED (12.00') WIDTH
 LT STA 14+90 TO LT STA 15+03.03 TRANSITION PAVED SHOULDER OVERLAY FROM EXISTING (4.70' US 421) TO EXISTING (2.00' KY 21) WIDTH
 LT STA 15+00 CONST 35 LF EDGE KEY
 LT STA 15+05 OVERLAY KY 21 TO THE BACK OF RADIUS AS FLAGGED
 LT STA 15+31 TO LT STA 15+50 PAVE SHOULDER ON KY 21 TO FACE OF GUARDRAIL TO BACK OF RADIUS AS FLAGGED
 LT STA 15+37.33 TO LT STA 15+97 CONSTRUCT 50 LF W BEAM GUARDRAIL 25 LF W BEAM GUARDRAIL SINGLE FACE-A 1'- TERMINAL SECTION TYPE 1
 LT STA 15+92 TO LT STA 17+00 REMOVE 126 LF EX GUARDRAIL
 STA 16+11 REMOVE EXISTING 24' SINGLE SPAN BRIDGE. ALL MATERIALS OF THE EXISTING BRIDGE SHALL BECOME THE PROPERTY OF THE CONTRACTOR AND SHALL BE DISPOSED OF IN ACCORDANCE WITH THE CURRENT SPECIFICATIONS.
 STA 16+11 CONSTRUCT 40' PRECAST 3-SIDED CULVERT CONST. 56 LF GUARDRAIL "W" BEAM -S FACE BR
 LT STA 16+25 TO LT STA 17+00 CONST. 75 LF OF W BEAM GUARDRAIL 25 LF W BEAM GUARDRAIL SINGLE FACE-A 1'- TERMINAL SECTION TYPE 1
 LT STA 16+44 TO LT STA 16+92.42 CONST. SPCL 2' FB DITCH -23 SOYD TRM 1
 LT STA 17+50.77 TO LT STA 19+75 CONST. SPCL "V" DITCH
 C.P. 105

LT STA 17+10 CONST. 12' ENTRANCE
 - 70 SOYD SURFACE
 - 71 SOYD BASE
 - 73 SOYD CSB
 - 60 LF OF 18" ENTRANCE PIPE
 (DO NOT DISTURB EXISTING BRICK POSTS)

LT STA 19+35 END PAVED SHOULDER
 STA 19+94.4 BEGIN LANE TAPER (55:1)
 TO EX. WIDTH (10.58' LTY)(10.08' RT)

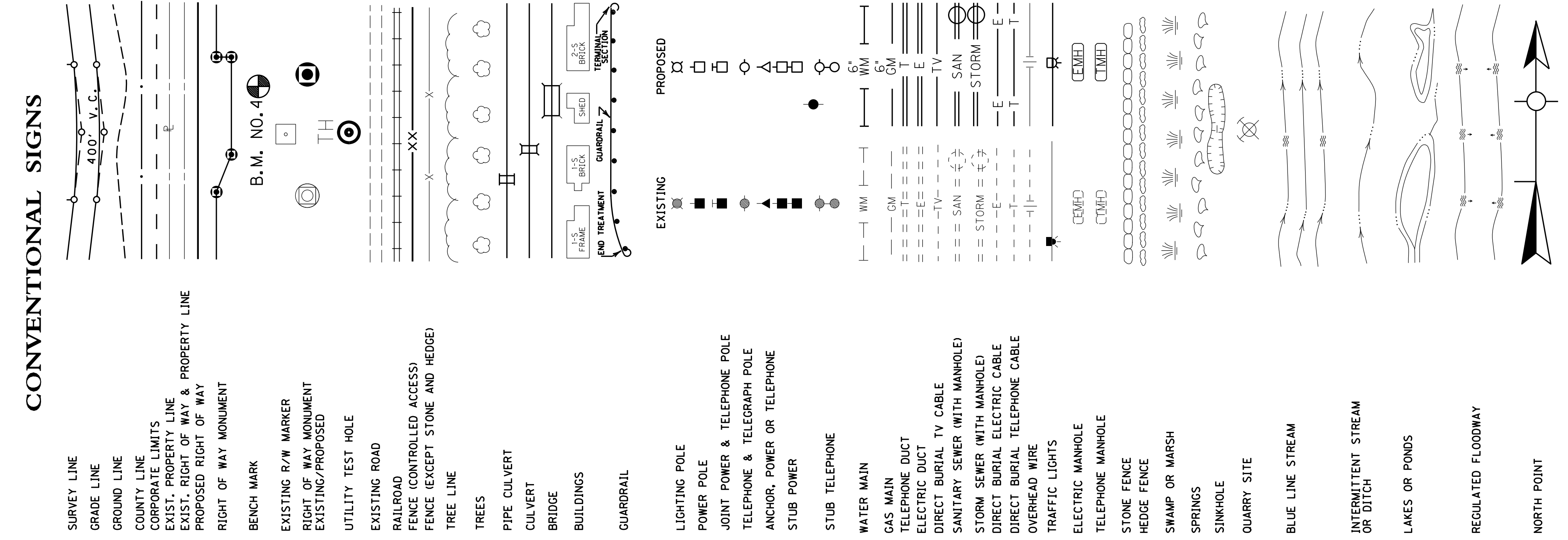
LT STA 20+25 CONST ENTRANCE APPROX
 264 SOYD 1.25' SURF
 264 SOYD 3' BASE
 264 SOYD 8' CSB
 (USE DILLON COURT PAVEMENT DESIGN)

PI 18+26.48
 STA 19+61.49 ML =
 STA 50+00.00 DILLON CT.

END CONST
 STA 21+00.00

RT STA 19+80 BEGIN SHOULDER TAPER (15:1)
 TO EX. WIDTH (0.00')

PI STA 18+26.48
 $\Delta = 11^{\circ}33'04'' RT$
 $T = 131.49'$
 $LR = 262.08'$
 $LE = 1300.00'$
 $EE = 5.90\%$
 $Runoff = 151.00$
 $Runout = 51.00$
 (SEE X-SECT FOR SUPER ELEV. TRANSITION)



LT STA 15+92 TO LT STA 17+00 REMOVE 126 LF EX GUARDRAIL
 STA 16+11 REMOVE EXISTING 24' SINGLE SPAN BRIDGE. ALL MATERIALS OF THE EXISTING BRIDGE SHALL BECOME THE PROPERTY OF THE CONTRACTOR AND SHALL BE DISPOSED OF IN ACCORDANCE WITH THE CURRENT SPECIFICATIONS.
 STA 16+11 CONSTRUCT 40' PRECAST 3-SIDED CULVERT CONST. 56 LF GUARDRAIL "W" BEAM -S FACE BR
 LT STA 16+25 TO LT STA 17+00 CONST. 75 LF OF W BEAM GUARDRAIL 25 LF W BEAM GUARDRAIL SINGLE FACE-A 1'- TERMINAL SECTION TYPE 1
 LT STA 16+44 TO LT STA 16+92.42 CONST. SPCL 2' FB DITCH -23 SOYD TRM 1
 LT STA 17+50.77 TO LT STA 19+75 CONST. SPCL "V" DITCH
 C.P. 105

RT STA 19+80 BEGIN SHOULDER TAPER (15:1) TO EX. WIDTH (0.00')

DESIGNED BY: _____
 DATE SUBMITTED: _____

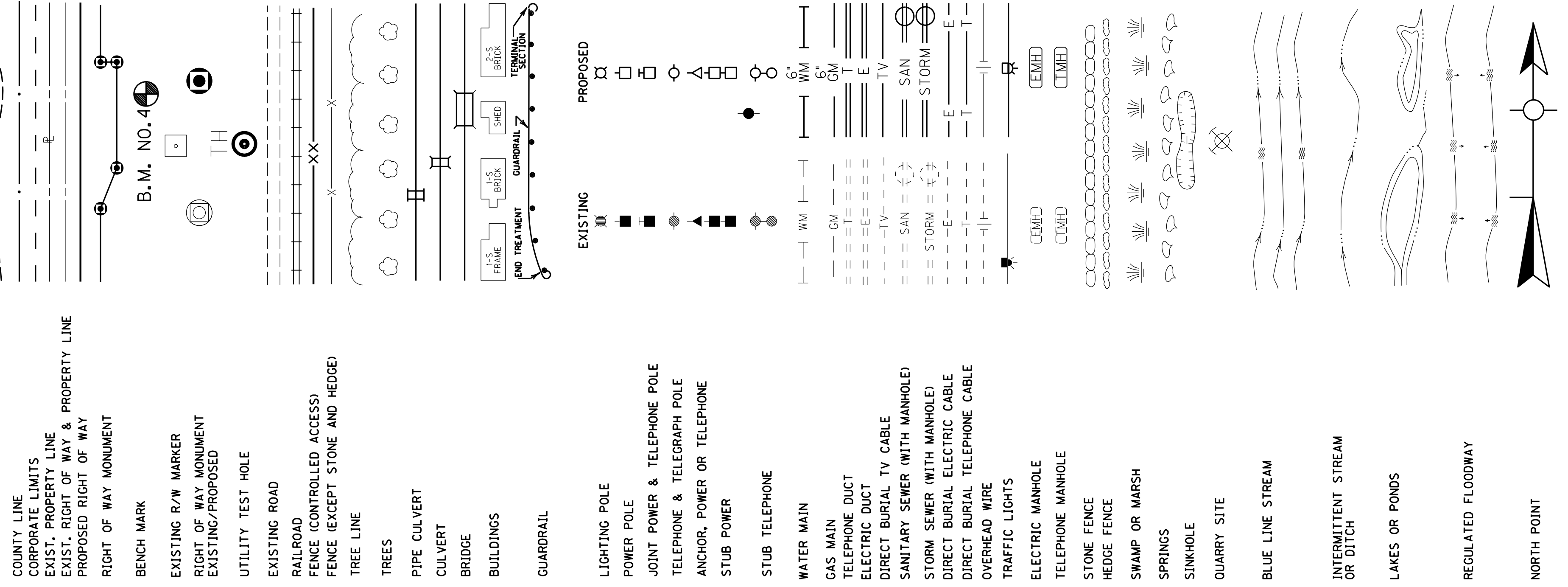
SCALE: 1"=50'

Commonwealth of Kentucky
DEPARTMENT OF HIGHWAYS
 COUNTY OF
MADISON

PROJECT STP BRO 4212 045
 NUMBERS: FD52 076 0421 002-003

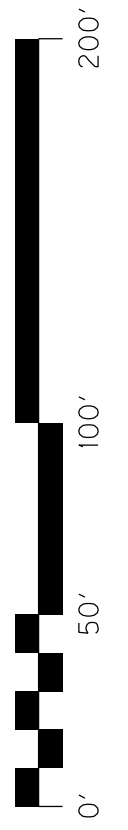
US 421 OVER COWBELL CREEK
 PLAN SHEET

- CONVENTIONAL SIGNS**
- SURVEY LINE
 - GRADE LINE
 - GROUND LINE
 - COUNTY LINE
 - CORPORATE LIMITS
 - EXIST. PROPERTY LINE
 - EXIST. RIGHT OF WAY & PROPERTY LINE
 - PROPOSED RIGHT OF WAY
 - RIGHT OF WAY MONUMENT
 - BENCH MARK
 - EXISTING R/W MARKER
 - RIGHT OF WAY MONUMENT EXISTING/PROPOSED
 - UTILITY TEST HOLE
 - EXISTING ROAD
 - RAILROAD
 - FENCE (CONTROLLED ACCESS)
 - FENCE (EXCEPT STONE AND HEDGE)
 - TREE LINE
 - TREES
 - PIPE CULVERT
 - CULVERT
 - BRIDGE
 - BUILDINGS
 - GUARDRAIL



BEFORE YOU DIG

The contractor is instructed to call 1-800-752-6007 to reach KY 811, the one-call system for information on the location of existing underground utilities. The call is to be placed a minimum of two (2) and no more than ten (10) business days prior to excavation to the members of the KY 811 one-call Before-Dig (BD) service. The contractor must coordinate excavation with the utility owners, including those whom do not subscribe to KY 811. It may be necessary for the contractor to contact the County Court Clerk to determine what utility companies have facilities in the area.



MicroStation v8.11.9.832
 E-SHEET NAME: R00300PL
 DATE PLOTTED: October 19, 2018
 USER: caeyr.smth
 FILE NAME: C:\PWORK\CASEY.SMTH\DIR\1521621\R00300PL.DGN